

## Additions - Various Schools

### Administrative Data

<b>Architect:</b>	Various
<b>General Contractor:</b>	Various
<b>Scope of Work:</b>	Ongoing program to provide additions at various schools.
<b>Phase of Work:</b>	Design and Construction

### Current Status

See following sheet for details.

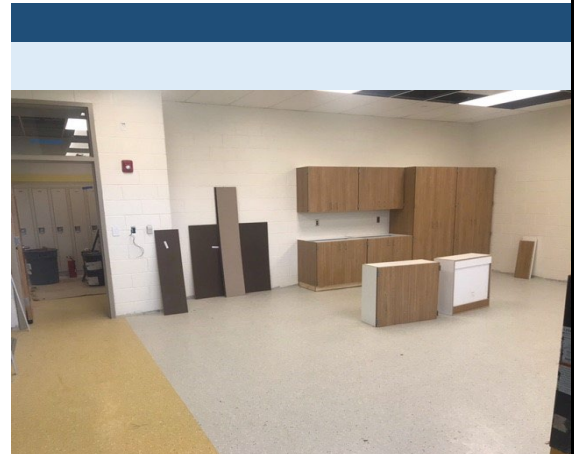
### Project Schedule

See following sheet for details.

### Fiscal Data

	Approved Budget *	Current Appropriation*	Encumbered
<b>Plans &amp; Engineering</b>	\$300,000	\$300,000	See following sheet for details
<b>Construction</b>	\$3,600,000	\$3,600,000	
<b>FFE</b>	\$100,000	\$100,000	
<b>Project Support</b>			
<b>Total</b>	\$4,000,000	\$4,000,000	

\* FY24 Program



Crofton MS



Park ES

## Additions - Various Schools - Continued

### Schools in Construction:

School	Project Description	Const. Cost	Fiscal Year	Ed Specs/ Schematic	Design Dev./ Const Documents	Start Const.	Completion	Architect	General Contractor	Current Status
Crofton MS	4 Classroom Addition w/Cafeteria Expansion	\$6,000,000	FY 23	Sept-21/ Dec-21	Mar-22/ Jul-22	Sep-22	Aug-24	Smolen, Emr, Ilkovitch Architects	Towson Mechanical, Inc.	70%
	Above ceiling electric and sprinkler installation are complete in the classroom addition. Finishes are currently being installed.									
Park ES	6 Classroom Addition	\$5,100,000	FY 24	Apr-22/ Aug-22	Oct-22/ Mar-23	Jan-24	Apr-25	Whitman, Requardt & Associates, LLP	Towson Mechanical, Inc.	0%
	The Board of Education authorized the construction contract award on December 20, 2023.									

## Center of Applied Technology North - Replacement

### Administrative Data

<b>Architect:</b>	Grimm + Parker Architects
<b>Construction Manager:</b>	Oak Contracting, LLC
<b>Scope of Work:</b>	Design for the replacement of Center of Applied Technology North.
<b>Phase of Work:</b>	Design

### Current Status

<b>Percent Complete:</b>	100%
Construction documents are complete and bid documents are being finalized.	

### Project Schedule

	Approved Ed Spec	Current	Actual
<b>Educational Specifications</b>	Apr-22	Apr-22	Apr-22
<b>Feasibility Study</b>	n/a	n/a	n/a
<b>Schematic Design</b>	Dec-22	Dec-22	Dec-22
<b>Design Development</b>	Jul-23	Apr-23	Apr-23
<b>Construction Documents</b>	Feb-24	Dec-23	Dec-23
<b>Bid Award</b>	Jul-24	Mar-24	
<b>Start Construction</b>	Aug-24	Apr-24	
<b>Occupancy</b>	Aug-26	Aug-27	

### Fiscal Data

	Approved Budget	Current Appropriation	Encumbered
<b>Plans &amp; Engineering</b>	\$8,032,000	\$8,032,000	\$10,392,777
<b>Construction</b>	\$100,840,000	\$54,811,000	\$48,105
<b>FFE</b>	\$9,140,000	\$0	\$0
<b>Project Support</b>	\$1,821,000	\$911,000	\$0
<b>Total</b>	\$119,833,000	\$63,754,000	\$10,440,882

### Vital Statistics

	Before	After
<b>State Rated Capacity</b>	378	544
<b>Gross Square Footage</b>	155,764	178,343



## Hillsmere ES - Replacement

### Administrative Data

<b>Architect:</b>	Gaudreau, Inc.
<b>Construction Manager:</b>	Whiting-Turner Contracting Co.
<b>Scope of Work:</b>	Construction for a replacement school for Hillsmere Elementary School.
<b>Phase of Work:</b>	Construction

### Current Status

#### Percent Complete:

Phase 1 (Building) - 100% complete.

Phase 2 (Site) - 99% complete. Remaining sod is being installed and sediment and erosion controls have been removed.

This is the last report for this project.

### Project Schedule

	Approved Ed Spec	Current	Actual
<b>Educational Specifications</b>	May-19	May-19	May-19
<b>Feasibility Study</b>	Sep-19	Oct-19	Oct-19
<b>Schematic Design</b>	Jan-20	Mar-20	Mar-20
<b>Design Development</b>	Apr-20	Aug-20	Aug-20
<b>Construction Documents</b>	Nov-20	Jan-21	Jan-21
<b>Bid Award</b>	Jan-21	May-21	May-21
<b>Start Construction</b>	Apr-21	May-21	May-21
<b>Occupancy</b>	Aug-23	Aug-23	Aug-23

### Fiscal Data

	Approved Budget	Current Appropriation	Encumbered
<b>Plans &amp; Engineering</b>	\$3,056,000	\$3,056,000	\$2,922,723
<b>Construction</b>	\$32,070,000	\$32,070,000	\$32,332,450
<b>FFE</b>	\$1,854,000	\$1,854,000	\$1,600,528
<b>Project Support</b>	\$1,985,000	\$1,985,000	\$246,771
<b>Total</b>	\$38,965,000	\$38,965,000	\$37,102,472

### Vital Statistics

	Before	After
<b>State Rated Capacity</b>	509	506
<b>Gross Square Footage</b>	45,885	67,988





## Meade HS - Revitalization

### Administrative Data

<b>Architect:</b>	Smolen Emr Ilkovitch Architects (SEI)
<b>Construction Manager:</b>	Jacobs, Inc.
<b>Scope Of Work:</b>	Construction for the revitalization of Meade High School.
<b>Phase of Work:</b>	Construction

### Current Status

**Percent Complete:** 78%

Meade HS is a phased renovation/addition project.

Phase 1A - Site work - 100% complete.

Phase 1B - Classroom addition - 100% complete.

Phase 1C - Renovation - 100% complete.

Phase 1D - Renovation - 100% complete.

Phase 2A/2B - Renovation - 15%. Demolition is complete and concrete foundations, structural steel, masonry walls and electrical rough-ins are in progress.

### Project Schedule

	Approved Ed Spec	Current	Actual
<b>Educational Specifications</b>	Jan-18	Feb-18	Feb-18
<b>Feasibility Study</b>	n/a	n/a	n/a
<b>Schematic Design</b>	Apr-18	Jun-19	Jun-19
<b>Design Development</b>	Oct-18	Nov-19	Nov-19
<b>Construction Documents</b>	Apr-19	Sep-20	Sep-20
<b>Bid Award</b>	Nov-19	Jan-21	Jan-21
<b>Start Construction</b>	Jun-20	Mar-21	Mar-21
<b>Occupancy</b>	Aug-24	Dec-24	

### Fiscal Data

	Approved Budget	Current Appropriation	Encumbered
<b>Plans &amp; Engineering</b>			
<b>Construction</b>	\$124,397,000	\$124,397,000	\$113,139,849
<b>FFE</b>			\$0
<b>Project Support</b>			\$0
<b>Total</b>	\$124,397,000	\$124,397,000	\$113,139,849

### Vital Statistics

	Before	After
<b>State Rated Capacity</b>	2,527	2,538
<b>Gross Square Footage</b>	351,142	385,697



## Old Mill MS South - Replacement

### Administrative Data

<b>Architect:</b>	Grimm + Parker Architects
<b>Construction Manager:</b>	Turner & Townsend Heery
<b>Scope of Work:</b>	Construction of a replacement school for Old Mill Middle School South.
<b>Phase of Work:</b>	Construction

### Current Status

**Percent Complete:** 70%

Above ceiling mechanical, electrical, and plumbing rough-ins continue. All window frames have been installed and brick veneer is complete. Tile installation is ongoing in the kitchen and bathrooms and roof coping is being installed.

### Project Schedule

	Approved Ed Spec	Current	Actual
<b>Educational Specifications</b>	Apr-20	Apr-20	Apr-20
<b>Feasibility Study</b>	n/a	n/a	n/a
<b>Schematic Design</b>	Dec-20	Dec-20	Dec-20
<b>Design Development</b>	May-21	Apr-21	Apr-21
<b>Construction Document</b>	Dec-21	Nov-21	Nov-21
<b>Bid Award</b>	May-22	Feb-22	Feb-22
<b>Start Construction</b>	Jun-22	May-22	May-22
<b>Occupancy</b>	Sep-24	Sep-24	

### Fiscal Data

	Approved Budget	Current Appropriation	Encumbered
<b>Plans &amp; Engineering</b>	\$6,046,000	\$6,046,000	\$4,628,416
<b>Construction</b>	\$73,825,000	\$73,825,000	\$70,458,643
<b>FFE</b>	\$4,191,000	\$4,191,000	\$1,130,894
<b>Project Support</b>	\$1,704,000	\$1,704,000	\$526,248
<b>Total</b>	\$85,766,000	\$85,766,000	\$76,744,200

### Vital Statistics

	Before	After
<b>State Rated Capacity</b>	1,072	1,199
<b>Gross Square Footage</b>	159,635	158,877



## Old Mill MS North - Replacement

### Administrative Data

<b>Architect:</b>	Grimm + Parker Architect
<b>Construction Manager:</b>	Turner & Townsend Heery
<b>Scope of Work:</b>	Construction of a replacement school for Old Mill Middle School North.
<b>Phase of Work:</b>	Design

### Current Status

**Percent Complete:** 20%

Schematic Design was approved by the Board on November 1, 2023 and the schematic design package has been submitted to the State for review. Design development phase has begun.

### Project Schedule

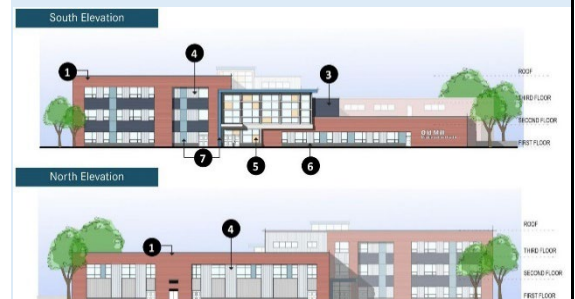
	Approved Ed Spec	Current	Actual
<b>Educational Specifications</b>	Jan-23	Apr-23	Apr-23
<b>Feasibility Study</b>	n/a	n/a	n/a
<b>Schematic Design</b>	Jul-23	Nov-23	Nov-23
<b>Design Development</b>	Nov-23	Mar-24	
<b>Construction Document</b>	Apr-24	Dec-24	
<b>Bid Award</b>	Nov-24	Apr-25	
<b>Start Construction</b>	May-25	May-25	
<b>Occupancy</b>	Aug-27	Aug-27	

### Fiscal Data

	Approved Budget	Current Appropriation	Encumbered
<b>Plans &amp; Engineering</b>	\$6,870,000	\$6,870,000	\$10,195,903
<b>Construction</b>	\$88,278,000	\$4,487,000	\$20,326
<b>FFE</b>	\$4,553,000		
<b>Project Support</b>	\$1,747,000		
<b>Total</b>	\$101,448,000	\$11,357,000	\$10,216,229

### Vital Statistics

	Before	After
<b>State Rated Capacity</b>	1,060	1,270
<b>Gross Square Footage</b>	159,635	170,649





## Old Mill HS - Replacement

### Administrative Data

<b>Architect:</b>	GWWO Architects
<b>Construction Manager:</b>	Jacobs Inc.
<b>Scope of Work:</b>	Construction for the replacement of Old Mill High School.
<b>Phase of Work:</b>	Design

### Current Status

**Percent Complete:** 20%

Schematic Design was approved by the Board on November 1, 2023 and the schematic design package has been submitted to the State for review. Design development phase has begun.

### Project Schedule

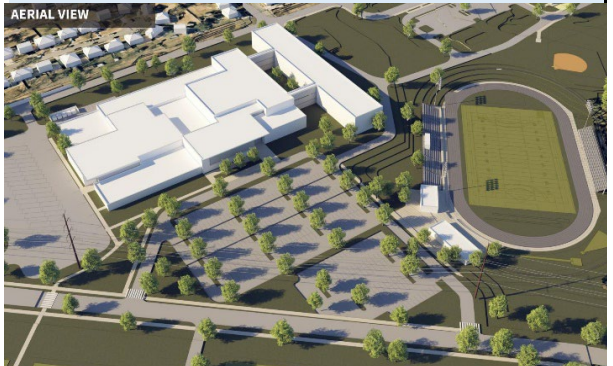
	Approved Ed Spec	Current	Actual
<b>Educational Specifications</b>	Jan-23	Apr-23	Apr-23
<b>Feasibility Study</b>	n/a	n/a	n/a
<b>Schematic Design</b>	Jul-23	Nov-23	Nov-23
<b>Design Development</b>	Nov-23	Mar-24	
<b>Construction Document</b>	Apr-24	Dec-24	
<b>Bid Award</b>	Nov-24	Apr-25	
<b>Start Construction</b>	May-25	May-25	
<b>Occupancy</b>	Aug-28	Aug-28	

### Fiscal Data

	Approved Budget	Current Appropriation	Encumbered
<b>Plans &amp; Engineering</b>	\$12,703,000	\$12,683,000	\$9,050,000
<b>Construction</b>	\$169,189,000		
<b>FFE</b>	\$8,229,000		
<b>Project Support</b>	\$3,755,000	\$20,000	\$0
<b>Total</b>	\$193,876,000	\$12,703,000	\$9,050,000

### Vital Statistics

	Before	After
<b>State Rated Capacity</b>	2,369	2,137
<b>Gross Square Footage</b>	283,194	342,628





## Severn Run HS (Old Mill West HS) - New School

### Administrative Data

<b>Architect:</b>	GWWO Architects
<b>Construction Manager:</b>	Jacobs, Inc.
<b>Scope of Work:</b>	Construction for a new high school to serve Severn, Millersville, Glen Burnie and surrounding communities.
<b>Phase of Work:</b>	Construction

### Current Status

**Percent Complete:** 85%

Main building finishes and casework installation continue. Interior mechanical, electrical, and plumbing rough-ins are 95% complete in the 3-story wing and finishes are being installed. The artificial turf at the stadium field is complete and the multi-purpose field turf is 50% complete.

### Project Schedule

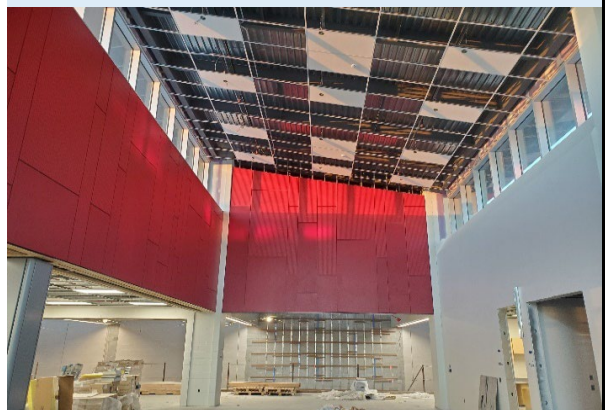
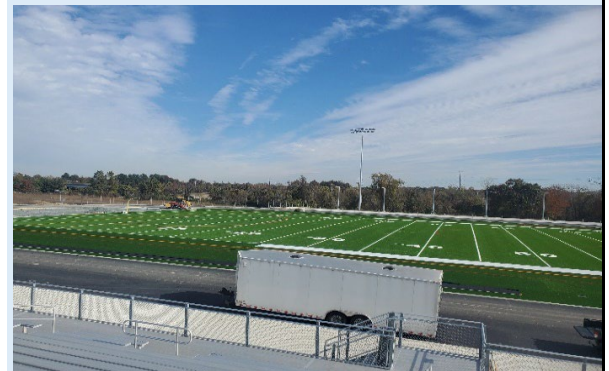
	Approved Ed Spec	Current	Actual
<b>Educational Specifications</b>	May-19	May-19	May-19
<b>Feasibility Study</b>	n/a	n/a	n/a
<b>Schematic Design</b>	Oct-19	Nov-19	Nov-19
<b>Design Development</b>	Mar-20	Mar-20	Mar-20
<b>Construction Document</b>	Dec-20	Oct-20	Oct-20
<b>Bid Award</b>	Apr-21	Mar-21	Mar-21
<b>Start Construction</b>	May-21	Apr-21	Apr-21
<b>Occupancy</b>	Aug-23	Aug-24	

### Fiscal Data

	Approved Budget	Current Appropriation	Encumbered
<b>Plans &amp; Engineering</b>	\$10,007,000	\$10,007,000	\$8,812,691
<b>Construction</b>	\$139,268,000	\$139,268,000	\$124,136,118
<b>FFE</b>	\$10,199,000	\$10,199,000	\$5,148,395
<b>Project Support</b>	\$2,323,000	\$2,323,000	\$726,666
<b>Total</b>	\$161,797,000	\$161,797,000	\$138,823,870

### Vital Statistics

	Before	After
<b>State Rated Capacity</b>	n/a	2,137
<b>Gross Square Footage</b>	n/a	312,510



## Quarterfield ES - Replacement

### Administrative Data

<b>Architect:</b>	Hord   Coplan   Macht, Inc.
<b>Construction Manager:</b>	Oak Contracting, LLC
<b>Scope of Work:</b>	Construction of a replacement school for Quarterfield Elementary School.
<b>Phase of Work:</b>	Construction

### Current Status

**Percent Complete:** 98%

Phase 1 (Building) - 100% complete.

Phase 2 (Site) - 97% complete. Final paving is complete. Removal of temporary fire lane and sitework to be completed by mid-January.

This is the last report for this project.

### Project Schedule

	Approved Ed Spec	Current	Actual
<b>Educational Specifications</b>	May-19	May-19	May-19
<b>Feasibility Study</b>	Sep-19	Oct-19	Oct-19
<b>Schematic Design</b>	Jan-20	Mar-20	Mar-20
<b>Design Development</b>	Apr-20	Aug-20	Aug-20
<b>Construction Document</b>	Nov-20	Dec-20	Dec-20
<b>Bid Award</b>	Jan-21	Mar-21	Mar-21
<b>Start Construction</b>	Apr-21	Apr-21	Apr-21
<b>Occupancy</b>	Aug-23	Aug-23	Aug-23

### Fiscal Data

	Approved Budget	Current Appropriation	Encumbered
<b>Plans &amp; Engineering</b>	\$3,692,000	\$3,692,000	\$3,202,949
<b>Construction</b>	\$37,773,000	\$37,773,000	\$35,047,428
<b>FFE</b>	\$2,304,000	\$2,304,000	\$1,759,577
<b>Project Support</b>	\$1,311,000	\$1,311,000	\$405,266
<b>Total</b>	\$45,080,000	\$45,080,000	\$40,415,220

### Vital Statistics

	Before	After
<b>State Rated Capacity</b>	463	585
<b>Gross Square Footage</b>	45,885	83,840





## Rippling Woods ES - Replacement

### Administrative Data

<b>Architect:</b>	Grimm + Parker Architects
<b>Construction Manager:</b>	Turner & Townsend Heery
<b>Scope of Work:</b>	Construction for a replacement school for Rippling Woods Elementary School.
<b>Phase of Work:</b>	Construction

### Current Status

**Percent Complete:** 92%

Phase 1 (Building) - 100% complete.

Phase 2 (Site) - 90% complete. New parent drop-off has been base paved and light pole bases have been installed. The sidewalk to the parking lot and bus loop is complete. The bio-retention ponds and final grading are in progress.

### Project Schedule

	Approved Ed Spec	Current	Actual
<b>Educational Specifications</b>	May-19	May-19	May-19
<b>Feasibility Study</b>	Sep-19	Oct-19	Oct-19
<b>Schematic Design</b>	Jan-20	Mar-20	Mar-20
<b>Design Development</b>	Apr-20	Jul-20	Jul-20
<b>Construction Document</b>	Nov-20	Dec-20	Dec-20
<b>Bid Award</b>	Jan-21	May-21	May-21
<b>Start Construction</b>	Apr-21	Jun-21	Jun-21
<b>Occupancy</b>	Aug-23	Aug-23	Aug-23

### Fiscal Data

	Approved Budget	Current Appropriation	Encumbered
<b>Plans &amp; Engineering</b>	\$4,355,000	\$4,355,000	\$3,313,235
<b>Construction</b>	\$44,981,000	\$44,981,000	\$41,670,065
<b>FFE</b>	\$2,704,000	\$2,704,000	\$2,213,861
<b>Project Support</b>	\$1,914,000	\$1,914,000	\$271,162
<b>Total</b>	\$53,954,000	\$53,954,000	\$47,468,324

### Vital Statistics

	Before	After
<b>State Rated Capacity</b>	613	775
<b>Gross Square Footage</b>	76,500	102,834





## Systemic Projects - Various Schools

### Administrative Data

<b>Architect:</b>	Various
<b>General Contractor:</b>	Various
<b>Scope of Work:</b>	Building Systemics - Various Schools
<b>Phase of Work:</b>	Design and Construction

### Current Status

See following sheet for details.

### Project Schedule

See following sheet for details.

### Fiscal Data

	Approved Budget*	Current Appropriation*	Encumbered
<b>Plans &amp; Engineering</b>	\$1,095,000	\$1,095,000	See following sheet for details
<b>Construction</b>	\$33,000,000	\$33,000,000	
<b>FFE</b>			
<b>Project Support</b>	\$1,420,000	\$1,420,000	
<b>Total</b>	\$35,515,000	\$35,515,000	\$0

\* FY24 Program



Bates MS



Chesapeake Complex



Northeast MS

## Systemic Projects - Various Schools - Continued

### Schools in Design:

School	Project Description	Project Cost	Fiscal Year	Const. Doc.	Start Const.	Completion	Engineer	General Contractor	Current Status
Brooklyn Park ES	Ceiling and Lights Replacement	\$750,000	FY 24	Mar-24	Jun-24	Oct-24	Burdette, Koehler, Murphy & Associates	TBD	5%
	Design is in progress.								
Brooklyn Park MS	PA Replacement	\$49,981.00	FY 24	Dec-23	Jun-24	Jan-25	Johnson, Mirmiram and Thompson	TBD	100%
	Design is complete, bidding to occur January 2024.								
Chesapeake Complex	Waste Water Treatment Replacement	\$3,500,000	FY 24	Dec-23	Jun-24	Aug-25	Gannett Fleming	TBD	100%
	Bid opening being held January 20, 2024.								
Glendale ES	Fire Alarm Replacement	\$360,000	FY 24	Jan-24	Jun-24	Aug-24	EBL, LLC	TBD	75%
	Design is in progress.								
Glen Burnie HS	Building Enclosure Phase 3 - Roof & Windows	\$161,675	FY 24	Jan-24	Jun-24	Aug-25	Gale Associates, Inc.	TBD	75%
	Design is in progress.								
Glen Burnie Park ES	Exterior Doors and Frames Replacement	\$200,000	FY 24	Oct-23	Jun-24	Aug-24	In-House Design	TBD	99%
	Preparing final bid documents.								
Oak Hill ES	Exterior Doors and Frames Replacement	\$230,000	FY 24	Oct-23	Jun-24	Aug-24	In-House Design	TBD	99%
	Preparing final bid documents.								
Sunset ES	Exterior Doors and Frames Replacement	\$230,000	FY 24	Oct-23	Jun-24	Aug-24	In-House Design	TBD	99%
	Preparing final bid documents.								

### Schools in Construction:

School	Project Description	Const. Cost	Fiscal Year	Const. Doc.	Start Const.	Completion	Engineer	General Contractor	Current Status
Annapolis MS	Roof Replacement	\$7,560,000	FY 24	Dec-22	Jun-24	Aug-25	Gale Associates, Inc.	Simpson Unlimited, Inc.	5%
	Construction to start June 2024.								
Arundel MS	Ceiling and Lights Replacement	\$3,000,000	FY 24	Aug-23	Jun-23	Aug-24	James Posey Associates	Janus Contractors	Phase 1 - 100% Phase 2 - 5%
	Phase 2 (first floor) scheduled for Summer 2024.								
Bates MS	HVAC Replacement	\$29,600,000	FY 23	Aug-22	Nov-22	Sep-25	James Posey Associates	Phillips Way	77%
	Phase A1-4 (Northwest wing first floor classrooms) complete. Phase A1-5 (North side of East wing classrooms) started December 9, 2023.								
Cape St. Claire ES	Public Address Replacement	\$400,000	FY 24	Dec-22	Jun-23	Jul-24	James Posey Associates	CT Electric	50%
	Equipment was delivered, installation has begun.								
Central ES	Main Distribution Center and MCC Replacement	\$400,000	FY 24	Mar-23	Nov-23	Jan-25	James Posey Associates	Grounded Electric	5%
	Installation to start June 2024.								
Crofton MS	Public Address Replacement	\$540,000	FY 24	Dec-22	Oct-23	Aug-24	Smolen, Emr, Ilkovitch Architects	CT Electric	5%
	Installation started January 2024.								

## Systemic Projects - Various Schools - Continued

### Schools in Construction:

School	Project Description	Const. Cost	Fiscal Year	Const. Doc.	Start Const.	Completion	Engineer	General Contractor	Current Status
Four Seasons ES	Roof Replacement	\$2,700,000	FY 24	Feb-23	Jun-24	Aug-24	Gale Associates, Inc.	Vatica	10%
	Construction to start June 2024.								
Glen Burnie HS	Building Enclosure Phase-2 - Walls	\$4,600,000	FY 24	Jan-23	Oct-23	Aug-24	Gale Associates, Inc.	Brawner	5%
	Review of submittals is in progress.								
Glen Burnie HS	Building Enclosure Phase-2 - Roof	\$2,500,000	FY 24	Jan-23	Jun-24	Aug-24	Gale Associates, Inc.	Citicorp	5%
	Review of submittals is in progress.								
Glen Burnie HS	Fire Alarm Replacement	\$700,000	FY 24	Dec-22	Jun-24	Dec-24	EBL Engineers LLC	Action Electric	5%
	Construction to start June 2024.								
Glen Burnie HS	Boiler Replacement	\$4,700,000	FY23	Aug-22	Dec-22	Aug-24	Burdette, Koehler, Murphy & Associates	Fresh Air Concepts	68%
	Installation of boilers is on-going.								
Hilltop ES	Ceiling and Lights Replacement	\$750,000	FY 24	Oct-22	Jul-23	Aug-24	Burdette, Koehler, Murphy & Associates	MGM	25%
	Construction ongoing.								
Jacobsville ES	Roof Replacement	\$2,500,000	FY 24	Nov-22	Jun-24	Aug-24	Gale Associates, Inc.	Vatica	5%
	Construction to start June 2024.								
Jones ES	Public Address and Fire Alarm Replacement	\$800,000	FY 24	Dec-22	Jun-23	Aug-24	Johnson, Mirmiran & Thompson, Inc.	Lee Electric	5%
	Installation to start March 2024.								
Lindale MS	HVAC Replacement	\$33,450,000	FY 24	Apr-23	Jan-24	Aug-26	James Posey Associates	Phillips Way	0%
	Contract awarded to Phillips Way at December 20, 2023 Board meeting. Project kick-off January 2024.								
North Glen ES	Roof Replacement	\$1,800,000	FY 24	Dec-22	Jun-24	Aug-24	Facility Engineering Associates, P.C.	Simpson Unlimited, Inc.	1%
	Installation to start Summer 2024.								
Northeast MS	Gym A/C Replacement	\$1,500,000	FY 24	Jan-23	Jun-23	Aug-24	James Posey Associates	JRA Associates	5%
	Construction began December 2023.								
Oak Hill ES	Main Distribution Center and MCC Replacement	\$400,000	FY 24	Mar-23	Nov-23	Jan-25	James Posey Associates	Grounded Electric	5%
	Submittals under review.								
Park ES	Public Address Replacement	\$400,000	FY 24	Apr-23	Sep-23	Apr-25	Whitman, Requardt, & Associates	CT Electric	5%
	Submittals under review.								
Riviera Beach ES	Exterior Doors and Frames Replacement	\$125,000	FY 24	Jan-23	Jun-23	Feb-24	In-House Design	Hayes Construction	90%
	Installation of glass and metal panels on-going.								
Woodside ES	Roof Replacement	\$300,000	FY 23	Nov-22	Jun-23	Dec-23	Facility Engineering Associates	Simpson Unlimited, Inc.	99%
	Punch list completed. This is the last report for this project.								



## Two River ES (West County ES) - New School

### Administrative Data

<b>Architect:</b>	GWWO Architects
<b>Construction Manager:</b>	J. Vinton Schafer & Sons, Inc.
<b>Scope of Work:</b>	Construction for a new elementary school to serve Odenton and surrounding communities.
<b>Phase of Work:</b>	Construction

### Current Status

**Percent Complete:** 72%

The sanitary force main is complete, exterior masonry veneer is 99% complete, and interior masonry is 95% complete. All roofing is installed and window installation is continuing. Mechanical, electrical, and plumbing rough-ins ongoing. Switch gear is on site.

### Project Schedule

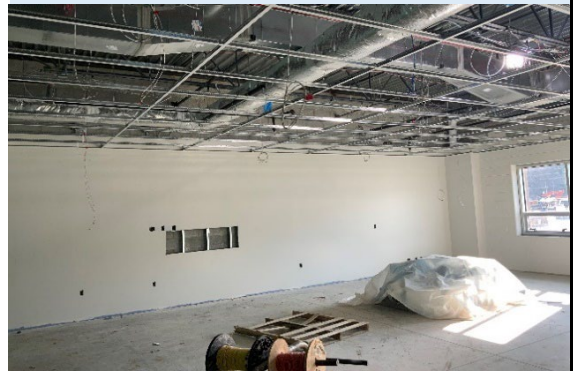
	Approved Ed Spec	Current	Actual
<b>Educational Specifications</b>	Apr-20	Apr-20	Apr-20
<b>Feasibility Study</b>	n/a	n/a	n/a
<b>Schematic Design</b>	Oct-20	Nov-20	Nov-20
<b>Design Development</b>	Mar-21	Apr-21	Apr-21
<b>Construction Documents</b>	Oct-21	Nov-21	Nov-21
<b>Bid Award</b>	Apr-22	Mar-22	Mar-22
<b>Start Construction</b>	May-22	May-22	May-22
<b>Occupancy</b>	Aug-24	Aug-24	

### Fiscal Data

	Approved Budget	Current Appropriation	Encumbered
<b>Plans &amp; Engineering</b>	\$3,495,000	\$3,495,000	\$3,291,670
<b>Construction</b>	\$42,821,000	\$42,821,000	\$42,158,482
<b>FFE</b>	\$2,893,000	\$2,893,000	\$532,128
<b>Project Support</b>	\$1,057,000	\$1,057,000	\$217,332
<b>Total</b>	\$50,266,000	\$50,266,000	\$46,199,612

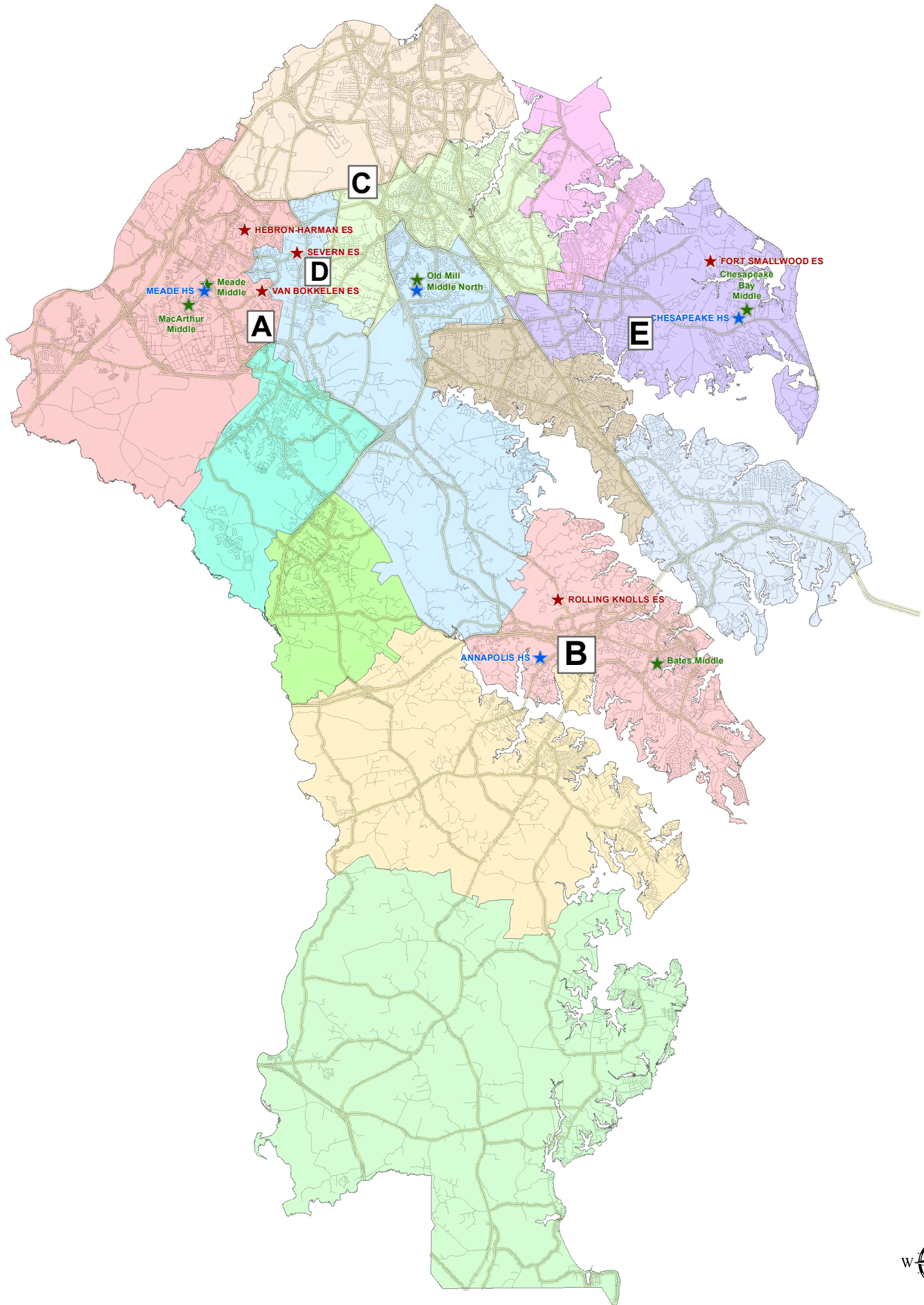
### Vital Statistics

	Before	After
<b>State Rated Capacity</b>	n/a	598
<b>Gross Square Footage</b>	n/a	87,090



# Project Reviews for October 2023 Through December 2023

## Anne Arundel County Subdivision Review



## MAJOR SUBDIVISIONS REVIEWED OCTOBER 2023 THROUGH DECEMBER 2023



Map Key	Project	Project Status	Number/Types of Units	Impacted Schools	Student Yield
A	Habitat for Humanity of the Chesapeake, Jacobs Road	Sketch	5 Single-Family Units	Van Bokkelen ES	1
				Meade MS	1
				Meade MS	1
B	119 Womack Drive	Sketch	328 Apartments (257 one-bedroom and 71 two-bedroom)	Rolling Knolls ES	5
				Bates MS	2
				Annapolis HS	3
C	Elysium	Modification	5 Single-Family Units	Harman ES	1
				MacArthur MS	1
				Meade HS	1
D	Wolfepack, LLC Property, Phase 2	Sketch	18 Townhomes	Severn ES	3
				Old Mill MS North	2
				Old Mill HS	2
E	River Glen, Lots 5,6 & open space B (808 River Glen Drive - Pasadena, MD)	Final	9 Single-Family Units	Fort Smallwood	2
				Chesapeake Bay MS	1
				Chesapeake HS	1

### DEVELOPMENT PROCESS (PROJECT STATUS)

**Sketch:** Developer refines the concept drawing to include the location of housing units on a lot, streets, sidewalks, and public spaces. This is a topographic line drawing that receives in-depth comments from the County review team. School capacities and the student population likely to be attributable to this development are recalculated.

**Site Development Plan (SDP):** Applies to properties that will not be subdivided into individual lots, principally commercial and multi-family projects such as condominiums and apartments. Used to address APFO conformity. School capacities and the student population likely to be attributable to this development are recalculated.

**Modification:** Modifications are required anytime the Code is not complied with during the development process.

**Final:** Developer submits a detailed plan that addresses all of the County review team comments. Once a developer receives Final Submission Approval, applications for waivers and permits are submitted.